

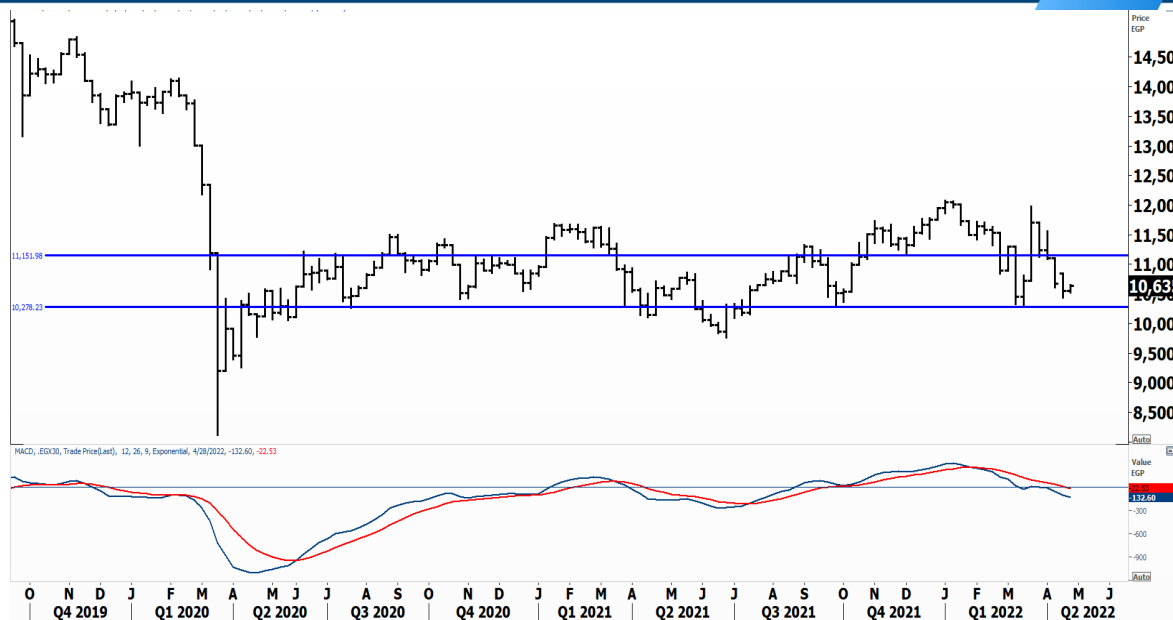


PIONEERSECURITIES

TECH TO THE POINT

27-Apr- 2022

This report must be read with the disclaimer
on the last page



Last	10,682.08
High Today	10,694.45
Low Today	10,529.49
Volume	M 53.567
First Support	10,200
Second Support	9,800
First Resistance	10,900
Second Resistance	11,200
Stop Loss	
HISTORICAL RETURN %	
1 WEEK	0.52%
1 MONTH	-7.48%
1 QUARTER	-7.45%
1 YEAR	1.48%
YTD	-10.60%

Analysis

The 10,200-10,300 area is still our major support to watch. The probability of a rise, since we are above support, is still there. However, given the fact that the market is still not able to rebound, this gives us an overall negative feeling about the overall situation.

We will wait and see if things will improve from here or not, as a break below 10,200-10,300 will be bearish long-term.

Equal Weights Global Index/ EGX 100

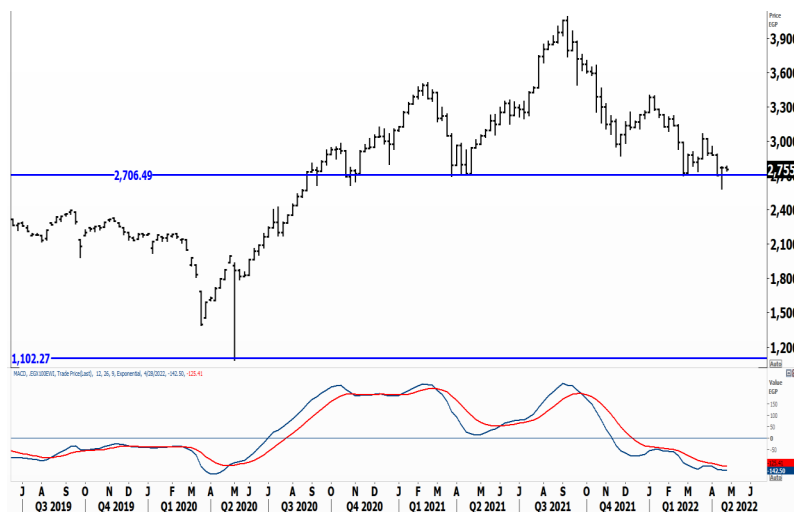
Analysis

The EGX 100 index did not break yet its major support on a weekly basis. The 2,700 level is the most important support lever for the index, and prices are still struggling above it.

The risk, however, of a breakdown is still high, and if this major support is violated, the next fall will be strong and will take the market to much lower targets.

We will, however, keep some hope since this breakdown did not take place here.

Our first short-term sign of strength (very short-term signal) is a break above 2,800, this will lead to a rebound to the 2,900 level.



Resistance

No stocks broke their resistance yesterday

Support


No stocks broke their support yesterday

Testing


Support


CIEB  Despite that 6.2 is the current support, the 6.4 level might serve as support too. We do not recommend, however, stepping in before a clear break above 6.85. If this breakout occurs, our target will be set around 7.25.

EMFD  If it rebounds from here, EMFD might approach the upper boundary of this lateral range that lies around 2.95. Position holders are recommended to place their stop below 2.6.

FWRY  Challenging its support that lies at 5.55. A clear close below this level will lead the stock to lower levels. Those who are thinking of entering should not do anything before a clear and confirmed breakout above 5.

Resistance

HRHO  Witnessed a nice rise the past few sessions to enter the gap zone. We believe that the 17.3-17.5 will be a hurdle for the stock.

ABUK  The 26 level should serve as resistance, followed by the 27. ABUK is one of the outperformers and is able until now to buck the overall market trend. From a bigger perspective, the confirmed breakout above 24.5 is a bullish sign for the stock.

Symbol	S. Description	Last	Buying Area 1	Buying Area 2	Selling Area 1	Selling Area 2	Selling Area 3	Stop Loss
--------	----------------	------	---------------	---------------	----------------	----------------	----------------	-----------

N.B. please note that the levels are too close as these trading opportunities only suit T+0 speculators

The prices that are accompanied by a green arrow in the above table show resistance levels. Thus, a break above these levels will pave the way to achieve one (or all) of the targets.

The area between buying area 1 and buying area 2 is a trading area.

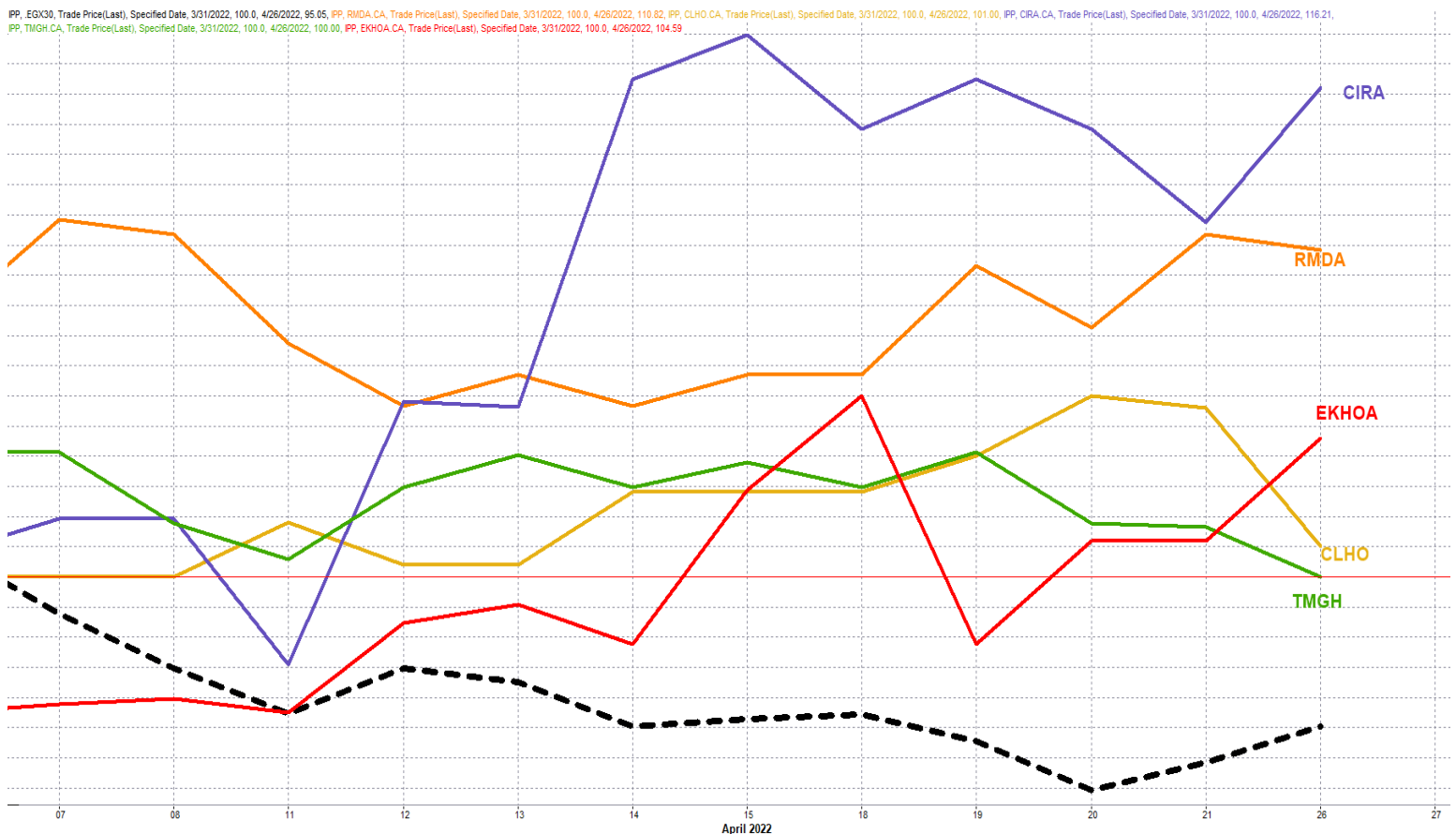
Yesterday's T+0/T+1 Trades



Symbol	Hit first Target	Hit Second Target	Hit Third Target	Hit Stop Loss	Triggered Buy	No Action

Top 5 Performers

EGX 30 Stocks; Past 2 Weeks



Symbol	S. Description	Last	Support 1	Support 2	Resistance 1	Resistance 2	Trend	Recommendation	Stop Loss/ Re-Entry
COMI.CA	COM INTL BK/d	43	40.8	38.2	45	47.5	↔	Hold	47.5
FWRY.CA	FAWRY FOR BANKING TECHNOLOGY /d	4.55	4.4	4.1	5.07	5.6	↔	Hold	5.07
ABUK.CA	ABU QIR FERTILIZERS /d	25.95	25	23.5	26	27.5	↔	Hold	23.5
EAST.CA	EASTERN CO/d	11.3	11	10.6	11.5	11.8	↔	Hold	11
HRHO.CA	EFG HERMES HOL/d	17.25	16.2	14.5	17.27	18.2	↔	Hold	14.5
TMGH.CA	TALAT MOSTAFA/d	8.45	8.2	7.6	9.15	9.5	↔	Hold	9.5
EKHO.CA	EGYPT KUWAIT H/d	1.28	\$1.23	\$1.19	\$1.29	\$1.34	↔	Hold	\$1.34
EFIH.CA	E-FINANCE FOR DIGITAL&FINANCIAL INVESTEMENT	17.3	17	16.6	18.9	19.48	↔	Hold	16.6
SWDY.CA	ELSWEDY ELECTR/d	7.45	7.2	7	7.8	8.2	↔	Hold	7.4
ETEL.CA	TELECOM EGYPT/d	15.78	15.1	14.4	16.5	16.9	↔	Hold	16.5
EKHOA.CA	EGYPT KUWAIT HOLDING CO	23	21.2	20.3	23.6	25.8	↑	Hold	21.2
CLHO.CA	CLEOPATRA HOSPITAL	5.05	4.95	4.85	5.4	5.7	↑	Hold	4.85
MFPC.CA	MISR FERTILIZERS PRODUCTION CO	98.98	92	88.6	100	117	↔	Hold	100
CIEB.CA	CREDIT AGRICOL/d	6.5	6.2	5.4	6.95	7.15	↔	Hold	7.15
CIRA.CA	CAIRO FOR INVESTMENT AND REAL ESTATE	11.97	11	10.5	12.6	13.5	↑	Hold	11
HDBK.CA	HOUSING AND DEVELOPMENT BANK	36.4	35.5	32.6	38.2	39.8	↔	Hold	35.5
AMOC.CA	ALEXANDRIA MINERAL OILS CO/d	3.72	3.44	3.2	3.7*	3.85	↓	P.Sell	3.7*
ISPH.CA	IBNSINA PHARMA/d	2.6	2.5	2.2	3	3.25	↓	P.Sell	3
ESRS.CA	EZZ STEEL/d	13.83	12.5	12	14	14.4	↔	Hold	12.5
MNHD.CA	NASR CITY HOUSE/d	2.24	2.15	1.92	2.35	2.5	↔	Hold	1.92
HELI.CA	HELIOPOLIS/d	5.29	4.75	4.44	5.7	6.3	↔	Hold	4.75
SKPC.CA	SIDI KERIR PET/d	7.84	7.26	6.9	7.9	8.5	↔	Hold	6.9
AUTO.CA	AUTO GHABBOUR /d	3.9	3.7	3.4	4	4.45	↔	Hold	4
PHDC.CA	PALM HILL DEV /d	1.5	1.44	1.38	1.56	1.69	↔	Hold	1.44
ORAS.CA	ORASCOM CONSTRUCTION	77.49	71.1	68.5	80	86	↔	Hold	68.5
ORWE.CA	ORIENTAL WEAVERS /d	7.59	7.2	6.85	7.65	7.9	↔	Hold	7.2
MTIE.CA	MM GROUP FOR INDUSTRY /d	3.27	3	2.91	3.7	4	↓	P.Sell	4
CCAP.CA	CITADEL CAPITA/d	1.298	1.27	1.17	1.35	1.45	↔	Hold	1.17
ORHD.CA	ORASCOM EGYPT/d	4.07	3.95	3.75	4.5	5.2	↔	Hold	4.5
RMDA.CA	TENTH OF RAMADAN FOR PHARMACEUTICAL	2.15	2	1.87	2.17	2.28	↔	Hold	2.17
ADIB.CA	ABU DHABI ISLAMIC BANK EGYPT	12.5	11.87	11.2	13.3	14	↔	Hold	11.87

Guidelines



Bullish



Bearish



Neutral

Trend: (Upgrade, Downgrade): Change in trend color refers to upgrade or downgrade in the trend relative to the previous trend direction. E.g. change from "↓ Down" to "↔ Flat" is considered an upgrade and vice versa.

Buy: Buy the full position.

P.Buy: Buy portion of a position

Hold: Don't Buy or sell.

P.SELL: Sell portion of a position.

Sell: Sell the full position.

Stop Loss: Completely exit the position (or) Re-entry in cases of Selling.

Disclaimer

This report has been prepared according to the general data available for public, in accordance with the professional standards applied in that career to the best knowledge of the reporter. The recommendations mentioned are a guiding tool representing a professional opinion, and not granting any profits, consequently it is not obligatory for our valued customers and investors. Pioneers Securities©, Egypt shall not be liable for any direct, indirect, incidental, or consequential damages, including limitation losses, lost revenues, or lost profits that may result from these materials. Republishing this report or any of its contents is subject to prior approval; referring to the source is a must. Opinions expressed are subject to change without notice and may differ or be contrary to the opinions or recommendations of Pioneers Securities©, Egypt Research or the opinions expressed by other business areas or groups of Pioneers Securities©, Egypt as a result of depending solely on the historical technical behavior (price and volume).

Technical Analysis Department

Saleh Nasser

Chief Technical Strategist

Ahmed Hassan

Senior Technical Analyst

Dina Fahmy

Senior Technical Analyst

Tips on reading the report

The first page includes an analysis of two major indices in the Egyptian Stock Market; the norm is that we will analyze both the EGX 30 and 70, but sometimes we will compare the EGX 30 to its 50 counterpart if there is important information in this comparison. We also use the Hermes Last Index interchangeably with the EGX 30. The .HRMSL index has an important edge; it uses last prices instead of VWAP. First thing our clients should do is to read the indices analysis carefully to have a clear understanding on our overall view.

The second page includes stocks that broke out beyond their resistance levels, and those that violated their support levels. It also includes stocks that are testing their support levels and those that are testing their resistance. This analysis is important and it is the core of our recommendations. It is important to note though that not all stocks that are testing their support levels are bullish, and not all that are testing their resistance levels are bearish. To make it easier for our clients, we have placed a bull face 🐂 if we consider the stock under study bullish, and a bear face 🐻 if we consider it bearish. We also added a big bullet 🍒 if we are neutral.

It is important to note that you might find a stock that we consider bullish in our analysis (in the breakouts/testing section) but it remains as a hold or partial sell in the table. The conflict here is that the table is more conservative. This will not be an issue with our clients, because our analysis will explain why we are being bullish/bearish on the stock.